

CAMERA & VIDEO SPECIALISTS FOR OVER 30 YEARS

PHOTO WAREHOUSE

MORE THAN JUST A CAMERA STORE

BE IN TO WIN WITH **Panasonic**

Buy any
Panasonic
camera
or lens and
be in to
WIN a 50"
4K TV!



6
TO BE
WON!

From 1st November to 31st January 2021
*Terms and conditions apply

SONY α7C



NEW

See more Sony products on pages 6-7

Canon EOS R6



NEW

See more Canon products on pages 2-3

FUJIFILM X-S10



NEW

See more Fuji products on pages 8-9

Nikon Z 6II



NEW

See more Nikon products on pages 10-11

OLYMPUS Tough TG-6



See more Olympus products on page 14



There is nothing like getting good news before everyone else.

SIGN UP FOR OUR EMAILS AND GET EARLY WARNING OF OUR SPECIAL DEALS!

Scan the QR CODE on each page to see our Hot Pricing!

Stores at six great locations or
shop online 24/7 at www.photowarehouse.co.nz

Canon EOS 5D Mark IV

BODY ONLY

A design classic in its fourth and last version, the 5DIV is loved by thousands of users and now to help ease the pain a new low price, and \$250 cash back from Canon!

30.4 MEGAPIXEL
DIGIC6+ PROCESSOR
4K VIDEO
3.2" TOUCH SCREEN

+ 24-105MM LENS

Or, if you need a lens, the super versatile 24-105 L series zoom kit also attracts the \$250 cash back offer.

\$250 CASH BACK
VIA ONLINE REDEMPTION



Canon

Canon

\$100 CASH BACK
VIA ONLINE REDEMPTION



EOS 90D

+ 18-55MM LENS

With all of the changes in new mirrorless and high resolution full frame it's easy to overlook the top crop sensor models, the 90D is a super capable camera of moderate size and cost. Great buying with the 18-55, and some cash back from Mr Canon!

32.5 MEGAPIXEL
4K MOVIES
CMOS AF SYSTEM
11 FRAMES PER SECOND

+ 18-135MM LENS

Or, maybe consider this lovely STM 18-135 as a better match for your 90D, video or stills, this lens covers a huge range and is super fast to focus.



\$200 CASH BACK
VIA ONLINE REDEMPTION

Canon EOS 6D Mark II

BODY ONLY

Another opportunity to trade up maybe, the 6D Mark II is perfect for the enthusiast moving up to full frame, landscapes, astro, portraits, even weddings. Use Canons \$200 cash back to pick up a new lens as well.

26.2 MEGAPIXEL
DIGIC7 PROCESSOR
4K VIDEO
VARI ANGLE SCREEN



\$100 CASH BACK
VIA ONLINE REDEMPTION

Canon EOS 850D

+ 18-55MM LENS

In early 2003 when we saw the radical 300D who would have thought 17 years later Canon would still be setting the standards in digital reflex cameras. Start your journey in photography with this super little camera.

24.1 MEGAPIXEL
DIGIC8 PROCESSOR
4K VIDEO
CMOS APS-C SENSOR

CLAIM UP TO

\$250
CASH BACK...

VIA ONLINE REDEMPTION WHEN YOU PURCHASE SELECTED CANON PRODUCTS.

...which you could spend on a weekend camping trip.



Purchases must be from Canon NZ Authorised Dealers between 02/11/2020 and 05/01/2021. Cash back claims with proof of purchase must be received online by 19/01/2021. Open to New Zealand residents aged 18+ only. Offer not available in conjunction with any other Canon New Zealand promotions. See canon.co.nz/cashback or in store for full terms.

Canon



Canon G7X Mark III

The compact camera for people who don't wish to compromise on quality or control. If you want a weekend walkabout camera that gives you amazing results and no one can ring you on, this is it. Black or silver remains the only question!

20.1 MEGAPIXEL
4K MOVIES
Bluetooth CERTIFIED
DIGIC8 PROCESSOR



Canon SX740

20mp, massive 40x optical zoom, image stabilised, HD video. Hard to see how they pack all of these features into a pocket (or handbag) sized camera. We are often asked if anyone still makes an easy to use small camera - well Canon do.

20.1 MEGAPIXEL
4K MOVIES
40x ZOOM
10 FRAMES PER SECOND



\$100 CASH BACK
VIA ONLINE REDEMPTION

CANON RF 85MM

There is a theme here, light, fast, beautiful portraits just pour out of this lovely little 85mm.



\$100 CASH BACK
VIA ONLINE REDEMPTION

CANON RF 35MM F1.8

A fast hand-holdable macro for the RF, at last. Perfect for flowers, bugs or medical applications.



\$100 CASH BACK
VIA ONLINE REDEMPTION

CANON RF 24-105L IS

If you get the chance, pick this lens up with your R camera, but we do have them individually.



\$200 CASH BACK
VIA ONLINE REDEMPTION

CANON RF 24-105 STM

It's not a typo, the same length, but with a weight and dollar saving, lovely lens for an EOS RP.



CANON RF 70-200 F2.8

There is only one word for this new fast zoom - epic!



CANON RF 24-240
Every system needs an 'all in one', so Canon made one, amazing small form factor for a huge range.



CANON RF 100-500
As this flyer goes to print this piece of optical design genius will still be hard to get, order yours now.



CANON RF 600/800
I know, an f11 zoom seems insane. Let the team in store explain how the capabilities of the camera make sense of these lenses. A truly new concept.



SCAN THE QR CODE FOR LATEST PRICING

CAMERA & VIDEO SPECIALISTS FOR OVER 30 YEARS

STORES AT SIX GREAT LOCATIONS or shop online 24/7 at www.photowarehouse.co.nz/summer/page2

afterpay

FINANCE
MADE EASY
Credit Capable

TAX FREE
FOR OVERSEAS TRAVELLERS

Canon EOS R5

BODY ONLY

This is it, this is what technical evolution in photography has delivered. 45 million pixels, in body stabilisation and 8K video, this camera is amazing. On top of all of the new tech, there is also the possibility of adapting all of your existing Canon EF lenses.

Limited stocks, check in store.

If there is an RF lens you would like with your R5 body let the team know, we will do what we can to help!



Scan the QR CODES at the bottom of these pages to see our Hot Prices on these Canon products!

GAME ON

STEP INTO THE NEW ERA OF FULL-FRAME MIRRORLESS WITH THE EOS R5 & R6



Canon EOS R6

BODY ONLY

If the R5 looks fantastic, but the file size or price is limiting your enthusiasm, consider the R6 as your next full frame mirrorless. You lose some pixels but save some dollars on the R6.

Your computer may thank you for the more manageable files too. A true stills/video hybrid.

+ 24-105 STM LENS

To tempt some new Canon people to the R6 we are happy to offer this great value kit.

No adapters, this is an RF lens designed specifically for the camera. If you happen to have existing Canon lenses the option to purchase the adapter is always there.



Canon EOS R

BODY ONLY

The camera that brought us full frame mirrorless photography is now at a new price point, and a good dash of cash from Canon helps even more!

This may be the perfect time to trade up from your existing traditional full frame Canon.



\$200 CASH BACK
VIA ONLINE REDEMPTION



\$200 CASH BACK
VIA ONLINE REDEMPTION



Canon EOS RP

BODY ONLY

Once again, a new price and a generous cash back makes the RP great buying, this is the smallest full frame offering from Canon. Physically not much bigger than older crop sensor Canons the RP produces fantastic results in a de-cluttered easy to use body.



Canon EOS M50

+ 15-45MM LENS

Now world famous as the vloggers camera of choice the M50 is much more than that. Sure the flip around screen and the external mic jack are critical vloggers features, but the M50 is also very cool little stills camera.

TWIN LENS KIT

Or, pimp your new M50 up with the addition of a longer zoom, perfect for kids sports, wildlife and action photography, this longer zoom adds so many more options. Equivalent to a 300mm lens on a traditional camera this long zoom gets you close.



\$100 CASH BACK
VIA ONLINE REDEMPTION



Canon EOS M6 MKII

+ 15-45MM LENS

The M50 may be the big seller, but the M6II is worth a look. The higher resolution 32mp sensor is outstanding and the form factor is tiny. If you add a couple of little Canon prime lenses into this set you have an amazing walk around kit that weighs nearly nothing.



\$200 CASH BACK
VIA ONLINE REDEMPTION



\$100 CASH BACK
VIA ONLINE REDEMPTION

Canon EOS M200

+ 15-45MM LENS

The latest series 24mp sensor, the newest Digic 8 processor, a flippy touch screen, and a very cool wifi system for instantly sharing your stills or video. The M200 has also just dropped below that magic \$1000 price point for the first time. Just one more decision to make, do you want black, or white?



CANON PRO-1000

There are two things to consider when buying a printer, quality of print, and economy of use. The Pro-1000 puts a huge tick in each box. You may not always need an A2 printer, but the economy you get from the larger ink tanks makes it the sensible choice.



CANON PRO-300

There is nothing quite like a beautiful print, this new release A3+ printer combined with the fantastic fine art papers available turns your study into a home dark room - without the 'dark'!



CANON EF-M 11-22

Wide, sharp and tiny, real estate, landscapes, travel.



CANON EF-M 18-150
One lens to rule them all? Canon continue to improve the concept of 'all in one'.



\$50 CASH BACK
VIA ONLINE REDEMPTION

CANON EF-M 55-200
The traditional length 'long' zoom from a twin lens kit, perfect for sport and wildlife.



\$50 CASH BACK
VIA ONLINE REDEMPTION

CANON EF-M 28MM

A macro with its own ring light, it's amazing. Jewellery, dentistry, models, bugs, flowers, this macro is so light and tiny, a trampers delight.



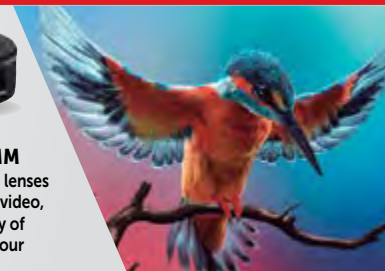
\$50 CASH BACK
VIA ONLINE REDEMPTION

CANON EF-M 22MM

Fixed sharp fast lenses are perfect for video, low cost way of upgrading your videos.



SCAN THE QR CODE FOR LATEST PRICING



CAMERA & VIDEO SPECIALISTS FOR OVER 30 YEARS

STORES AT SIX GREAT LOCATIONS or shop online 24/7 at www.photowarehouse.co.nz/summer/page3



S series FULL FRAME WITHOUT COMPROMISE

Panasonic
LUMIX



LUMIX S5

+ 20-60MM LENS

Panasonics design team have proven that full frame mirrorless doesn't need to be huge. This camera is only enormous in its capabilities, the rest of it is tiny! Video, stills, anything really, the new S5 is an amazing new model that we are really looking forward to.



BONUS
Technics EAH-F70
worth \$649

GREAT VALUE KIT!
\$3998



LUMIX S1

With it's new little brother the S5 coming out the S1 has had a price reduction. Even better value now at this price point it's possible to build a very nice kit based on this model. Save on the body and buy more lenses, every photographers dream.



BONUS
Technics EAH-F70
worth \$649



LUMIX S1R

47 million pixels of goodness in Panasonics flagship Lumix now at an even better price! But wait, there's more, on top of the recent price drop you also get a grip and a second battery at no charge, \$650 worth of free goodies. Check out the beautiful Leica designed lenses while you are in store.



BONUS
Technics EAH-F70
worth \$649



LUMIX S1H

The film makers out there will already know about the S1H, this more video specific design is the only full frame mirrorless model approved for shooting Netflix footage. Recent price reductions make it easier to add an S1H to your kit, check out the pricing, and maybe bring us a trade in to consider.



BONUS
Technics EAH-F70
worth \$649



L MOUNT

UNLIMITED
L FOR LIMITLESS - DESIGNED FOR COMPATIBILITY WITH LUMIX S-SERIES FULL-FRAME DIGITAL CAMERAS

LUMIX S PRO 16-35MM WIDE ZOOM LENS / F4

LUMIX S PRO 24-70MM STANDARD ZOOM LENS / F2.8

LUMIX S PRO 70-200MM TELEPHOTO ZOOM LENS / F2.8

LUMIX S PRO 50MM FIXED FOCUS LENGTH LENS / F1.4

LUMIX S PRO 70-200MM TELEPHOTO ZOOM LENS / F4 O.I.S

BE IN TO WIN WITH Panasonic

6 TO BE WON!

Buy any Panasonic camera or lens online or instore and you will go in the draw to WIN a 50" 4K TV!

From 1st November to 31st January 2021 *Terms and conditions apply



CRAZY PRICE!
\$399
while stocks last

Lumix TZ80

A Photo Warehouse favourite. The camera you buy when you 'just want a camera'. This is a fantastic option for just popping in a bag and always having a camera ready. Huge 30x zoom, viewfinder, 4K video, image stabilised and produces lovely prints up to A3+. The team here has sold literally hundreds of this 'family' of cameras and they are super reliable and easy to use.



Lumix TZ220

The current top model of the 'TZ' family the TZ220 boasts a larger sensor than the TZ80, but still has a really nice Leica 15x zoom. In normal terms this is a 24-360 zoom, perfect for those internalised NZ wide holidays, or, maybe even venturing overseas. The other bonus on this new model is the larger viewfinder, so if you enjoy using the old eye hole, this is for you.



Lumix FZ300

Another Photo Warehouse favourite, we have been supplying the FZ300 for years. This doesn't make it old, it makes it great! If Panasonic stop making this model we will go on strike. Popular with hunters, trampers, birders or anyone that wants a little camera with a big zoom, that's good in the dark and rainy days, the FZ300 ticks so many boxes.



Lumix FZ1000 Mark II

Following on from the legendary FZ1000 the Mark II is a lovely balance between versatility, value, quality and size. A Leica lens, large sensor, advanced video capabilities and an 'all in one' form factor make the FZ1000 Mark II the choice for the shooter that wants more than a compact and less size then a DSLR.



Lumix LX100 Mark II

The LX100II is for the man (or woman) that loves dials, this is a premium briefcase (or handbag) camera that's just so nice to use. Big sensor, really nice viewfinder and all manual controls on dials. There may be smaller top level compacts around, and there may be ones with more zoom, but for quality of result and the joy of using the machine, the LX100 is hard to beat.



SCAN THE QR CODE FOR LATEST PRICING

CAMERA & VIDEO SPECIALISTS FOR OVER 30 YEARS

STORES AT SIX GREAT LOCATIONS or shop online 24/7 at www.photowarehouse.co.nz/summer/page4



UNBOX YOUR CREATIVITY

What has the world come to? This looks like a box right? It is, really, but a super capable, super connected box. The new BGH1 makes use of the huge family of Micro four thirds lenses and you can use several of these all connected to build a fantastic streamed video system, all controlled remotely.



BONUS

Panasonic
EAH-AZ70
worth \$449

LUMIX
BGH1
THINK OUTSIDE
THE BOX

Panasonic
LUMIX

BONUS

**WIRELESS
HEADPHONES**
VALUED UP TO
\$649.99 RRP

when you purchase any Lumix Mirrorless Camera
(excl. G100) with a Lens (kits included) via redemption*

*T&Cs apply. Promotion runs 02/11/20 to 31/12/2020.



Panasonic
RZ-S300



Panasonic
RZ-S500



Technics
EAH-AZ70



Technics
EAH-F70N

Scan the QR CODES at the bottom of these pages to see our Hot Prices on these Panasonic products!

BONUS

Panasonic
EAH-AZ70
worth \$449



Lumix GH5

You can tell when a model hits the mark, it stays around. The GH5 broke new ground when it came out as a true 4K video and stills hybrid. Over time the price has drifted down, as they do, but the GH5 is still a brilliant workhorse for the user that wants to do a bit of everything. 20mp, 5 Axis image stabiliser, 4K video in camera, this is a lot of camera for the money.



BONUS

Panasonic
EAH-AZ70
worth \$449



Lumix G9 + 12-60 LEICA LENS

This summer we have several kits available with the popular G9, but for now let's focus on the amazing 12-60 Leica lens kit. For the first time we are able to offer the G9 with this premium lens below \$3000, and still supply the V-log video upgrade to GH5 specs. Check out the other kits on line, but this Leica lens is a lovely way to start, it may spoil you for other lenses.



GREAT VALUE!
\$2998

BONUS

with G95
Panasonic RZ-S500
worth \$349



Lumix G95/G85

There are way too many options to list with the mid range Lumix mirrorless cameras, both of these models in stock now, our favourite is the G85 with the wide ranging 14-140 zoom but we have loads of options. Check them out on line or make use of one of our excellent in-house Lumix Gurus.

BONUS

with G85
Panasonic RZ-S300
worth \$199



Lumix G100

The G100 is Panasonics 'go to' vloggers camera, it's way smaller than it's picture, light weight, has a really good microphone built in, fully swivelling screen and easy to use. This simplicity doesn't stop you from being able to use all of Panasonics excellent M43 lenses on it, or accessory microphones and lights.



BONUS

LIVE
STREAMING
KIT

HC-V800

FULL-HD PREMIUM HANDHELD CAMCORDER



I know what you are thinking, who buys a video camera now? We still think a traditional video camera is best, for videos! The V800 sports the top Leica lens, has a microphone jack and is hugely popular with families, schools, church and community groups and sports coaches. Great battery life, long zoom, easy use, it still makes sense even with all the choices.

HC-VX1

4K HANDHELD CAMCORDER WITH ZOOM LENS



So, I still know what you are thinking, you are convinced a video camera is for you but you want it to be recording in 4K? The VX1 has the posh Leica lens, the microphone jack, the amazing low light performance, and it records on 4K, for not too much more. This model is hugely popular for recording events like school productions, weddings and family occasions.

HC-WX1

4K ULTRA HD CAMCORDER



So, I'm thinking there will be a small number of clients that love the idea of the Leica lens, want the 4K recording, enjoy that it is so good in low light, but you are a bit old school and you also want the viewfinder. If so, the WX1 is for you, it has other benefits as well, so call in and get a demo.

HC-X1500/HC-X2000

4K PROFESSIONAL CAMCORDERS



Recent world events have made these two cameras flavour of the month, amazing broadcast quality video at a nearly affordable price. If you opt for the X2000 you also get XLR mic inputs, the grab handle, and SDI out for streaming. Both really nice cameras and better still, finally back in stock.

LEICA DG
VARIO-ELMAR
100-400MM
F4.0-6.3
ASPH m4/3
TELEPHOTO
ZOOM LENS



LEICA DG
VARIO
100-300MM
F4.0-5.6 II
POWER
O.I.S
m4/3
TELEPHOTO
ZOOM LENS



LEICA DG
VARIO-
SUMMILUX
10-25MM
F1.7 ASPH
m4/3
STANDARD
ZOOM



LEICA DG
VARIO-
ELMARIT
8-18MM
F2.8-4.0
ASPH
m4/3
WIDE ZOOM
LENS



LEICA DG
SUMMILUX 15MM
F1.7 ASPH m4/3
FIXED FOCUS LENGTH



LEICA DG SUMMILUX 25MM
F1.7 ASPH m4/3
FIXED FOCUS LENGTH



SCAN THE QR CODE FOR LATEST PRICING



CAMERA & VIDEO SPECIALISTS FOR OVER 30 YEARS

STORES AT SIX GREAT LOCATIONS or shop online 24/7 at www.photowarehouse.co.nz/summer/page5



SONY

Your journey has begun.
Let α take you further

BE INSPIRED



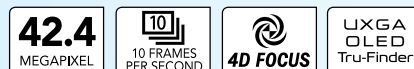
$\alpha 7$ III

We love the A7III, it's a favourite at the Photo Warehouse. The A7III is the thinking shooters choice that does it all. A very responsive 'middle' model that is reliable and allows the genius in you to come out when required, it's also very easy to use. Great buying at this special price....



$\alpha 7$ R III

The A7RIII, it has an 'R', so it's all about resolution, over 40mp of resolution! The A7RIII has a new big brother, but this model started the wave of working professional photographers changing to Sony. With the right lens on board the A7RIII will show you details in your images you never knew were there. Built to shoot stills, built to shoot video, and built to last years!



$\alpha 7$ C

Sony asked for feedback and the people replied.... 'we love the size of the crop sensor cameras, but we want the quality of full frame!' So here you go, a super small full frame camera in the form factor of the popular crop sensor models. We think Sony have nailed it in this truly portable hybrid model.



$\alpha 7$ R IV

The Sony A7RIV is just plain crazy. With 60mp, 10 frames a second and a 5 axis image stabiliser on board, this camera is part of the next generation of cameras. The only down side of the huge resolution is that the A7RIV will demand a lot of your lenses and we have the best lenses to partner with your new A7RIV.



$\alpha 9$ II

There is only one word for the Sony A9 II - rocket! It's not a camera we sell every day, but for some clients, this camera is epic. Moderate size files at 24mp, 20 frames a second and a hero in low light, a staggering 693 focus points.



$\alpha 7$ S III

On the outside this camera makes no sense, only 12mp, in 2020, really? The new A7S III is however the hottest full frame video camera on the market and once again, whilst it's not for everyone, those that need this feature set, will love it. Limited stocks, call for availability.



SONY

FE 12-24MM
F2.8 G
MASTER LENS

A new era of wide zoom performance



SONY

FE 90MM
F2.8 MACRO
G OSS LENS

Medium telephoto macro lens with built-in image stabilisation



SONY

FE 24-70MM
F2.8 G MASTER
LENS

Full Frame E-Mount standard zoom lens



SONY

FE 200-600MM
F5.6-6.3 G OSS

Super-telephoto zoom that is perfect for wildlife and more



SONY

FE 100-400MM
G MASTER
SUPER-TELEPHOTO
ZOOM LENS
with extraordinary resolution and fast, precise autofocus



SCAN THE QR CODE FOR LATEST PRICING

CAMERA & VIDEO SPECIALISTS FOR OVER 30 YEARS



STORES AT SIX GREAT LOCATIONS or shop online 24/7 at www.photowarehouse.co.nz/summer/page6

BE BOLD

BE RELENTLESS

BE ALPHA

α



α 6600

+ 18-135MM LENS

It had to happen, the rocket fast auto focus we have enjoyed in the full frame cameras is now in the crop sensor A6600. This combo is light, fast, and a super sharp 18-135 (equivalent to 28-200) lens makes this a beautiful travel camera, (remember travel?).



α 6400

+ 16-50MM LENS

If you read the specs you would wonder why the A6400 wasn't hundreds of dollars dearer. With features like real time eye AF for people and pets, 11 frames per second, 4K video, fully rotatable screen, we think this kit hits a great price point when balancing value vs features.



α 6100

+ 16-50MM LENS

So you love your phone, because it's small and light? But you are not really in love with the images because they don't look like what your old camera took? The body of this little pocket rocket is only 396 grams, and you can add all sorts of beautiful Sony mount lenses to get more rewarding results. Is it time you started using a camera again?



Scan the **QR CODES** at the bottom of these pages to see our **Hot Prices** on these **Sony** products!



α 6000

+ 16-50MM LENS

Changing from your traditional camera to a mirrorless model can be scary. What if you spend all of that money and don't like it? The A6000 Sony is a great way to start your mirrorless journey without spending a fortune. Start with this kit, or the twin lens option, and if you love it like we expect you will, you can trade the A6000 back in for one of the super high spec models.



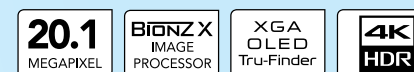
RX10 IV

Another break through camera from Sony that just wasn't even considered possible a few years ago. I think Sonys rivals may even acknowledge the RX10IV as the 'King of the Hybrids'. Massive zoom equivalent to a 24-600 zoom, crisp Zeiss glass, amazing 4K video, all in one little box. From weekend football to video blogs, if you just want one camera, one bag and one thing to learn, this is it!



RX100 VII

Don't tell me, you are looking at the RX100 pictured above and thinking 'they have the price wrong, surely'. The team at Photo Warehouse would love to have the chance to show you how this very tiny black box could be worth this amount. Trust me, it is. In Sony's own words, 'Pro-Level features in a To-Go package'.



SONY

E 10-18MM

F4 OSS

Super wide-angle zoom lens



SONY

E 16-55MM

F2.8 G

Wide-angle to portrait-length zoom



SONY

E PZ 18-105MM

F4 G OSS

6x G Lens power zoom for movies and stills



α Be inspired



SCAN THE QR CODE FOR LATEST PRICING



CAMERA & VIDEO SPECIALISTS FOR OVER 30 YEARS

STORES AT SIX GREAT LOCATIONS or shop online 24/7 at www.photowarehouse.co.nz/summer/page7



X SERIES CREATIVE PERFECTION - MAKE EVERYDAY REMARKABLE

X-A7

+15-45MM LENS

The X-A7 is just outstanding value at this new price point. There can be no better way to get into the world of X photography than this very cute little camera.



BUNDLE WITH THE XC 50-230MM AND GET THE LENS AT ½ PRICE!
WAS \$599 NOW \$299



X-T200

+15-45MM LENS

Don't be fooled by the simple uncomplicated look of this camera. The X-T200 is packed full of features you would expect of a camera twice the price. Add a couple of nice X lenses and you have a beautiful light weight kit.



BUNDLE WITH THE XC 50-230MM AND GET THE LENS AT ½ PRICE!
WAS \$599 NOW \$299



X-T30

+18-55MM LENS

The ever popular X-T30 may be listed here with an 18-55mm lens, but the team in store (or on line) can build an X-T30 kit to suit you. Another of our favourites is the X-T30 + 23mm f2 kit, forget that zoom and use your feet!



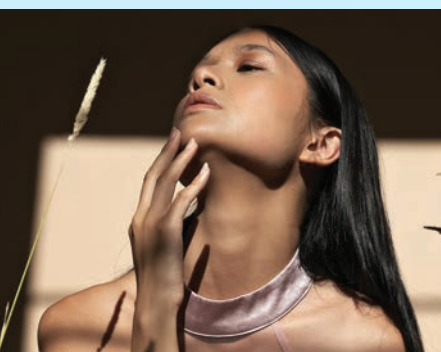
X-T3

BODY ONLY

Forgotten hero? Never! We may have X-T4's now but the X-T3 is still hugely popular with our enthusiast clients. Listed here as a body only as there are so many lens options, ask about the 16-80mm kit, or the 18-135mm, or the spectacular 16-55 f2.8!



HOT NEW PRICES ON X-T3 BODY & KITS



FUJIFILM X SERIES TAKE CONTROL OF YOUR STYLE
 INTRODUCING **X-S10**
 +18-55MM LENS

This new kid on the block will turn heads in the climbing, tramping and outdoors world. Fully featured, top quality video, and 30% weight saving on its big brothers. Check out the specs, and ask in store about trading your existing Fujifilm body up to the new X-S10.



PICK UP THE COOL XF55-200MM LENS FOR ONLY \$899 MORE WITH ANY FUJIFILM X-S10 COMBO!



AVAILABLE 19 NOVEMBER 2020

X SERIES



FUJIFILM
 Value from Innovation

Get up to \$500 cash back
 when you buy one of these lenses or the X-T4 Vertical Battery Grip with an X-T4



SUNDAY 1st NOVEMBER 2020 - SUNDAY 31st JANUARY 2021

Full terms and conditions and redemption form available at www.fujifilm.co.nz/products/promotions

X-T4

Fujifilm's hero product, I wonder if its competitors look at the X-T4 and think 'I wish we designed that'. A camera made for fun, or work, it just begs you to use it manually and make the most of its possibilities. We may well trade your existing Fujifilm (or other brand) body if you want to move up to the X-T4.



XF 16-55MM F2.8 R LM WR

XF 50-140MM F2.8 R LM OIS WR

XF 100-400MM F4.5-5.6 R LM OIS WR



SCAN THE QR CODE FOR LATEST PRICING

CAMERA & VIDEO SPECIALISTS FOR OVER 30 YEARS



STORES AT SIX GREAT LOCATIONS or shop online 24/7 at www.photowarehouse.co.nz/summer/page8



X-Pro3

Once again, a camera that is not for everyone, but for those that love that retro form factor, radical bright optical viewfinder, super sturdy design, this is the closest any high quality digital mirrorless camera gets to being a film camera. Analogue photography without the analogue bit!



X100V

Some of our clients have owned every model of the X100, Fujifilm keep improving them, but the design philosophy remains the same. Simple, sharp, light, unassuming, sharp (did we say that already?) This beautiful 23mm f2 lens is matched perfectly to the new 26mp sensor.



GFX 50R

The picture most people have in their heads is that medium format digital cameras are huge, expensive and unobtainable but the GFX 50R busts that myth. A new price point and more affordable lenses means a GFX system can work out less expensive than a full frame mirrorless kit - ask in store.



GFX100

In recent times the technical folk at Fujifilm have brought out new firmware to make the beast that is the GFX100 even more usable, especially in the field of high end video. It may not be the sort of thing to advertise in a flyer, but it's great to see what a serious brand like Fujifilm are doing at the very high end.



Scan the QR CODES at the bottom of these pages to see our **Hot Prices** on these Fujifilm products!



XF 50MM
F1.0 R WR



XF 56MM
F1.2 R



XF 23MM
F1.4 R



XF 35MM
F2



XF 35MM
F1.4 R



XF 10-24MM MKII
F4 R OIS



XF 18-55MM
F2.8-4 R LM OIS



XF 18-135MM
F3.5-5.6 R LM OIS WR

FUJINON THE NEW STANDARD IN OPTICS

TECHNO-STABI SERIES BINOCULARS

The new generation of Fujifilm's famous stabilised binoculars - better than ever! This compact, lightweight, and high powered ergonomic design is ideal for moving vehicles, nature watching, sports, concerts, and astronomical use where the user may want to utilise a higher magnification without a tripod.



TS
12x28
\$1200

TS
14x40
\$2840

ASTRONOMY - MARINE - LAW ENFORCEMENT

FMT SERIES BINOCULARS

Fujifilm's showing off, see how their spectacular lens technology transfers to binoculars- these are amazing, especially for the discerning sport optic user who demands the utmost quality, lowest distortion, and brightest image possible. The 10x50 FMTR-SX can function as compact astronomical binoculars for viewing celestial bodies.



FMTR
10x50
\$1440

ASTRONOMY - MARINE - BIRD WATCHING

MARINER SERIES BINOCULARS

True marine binoculars at a reasonable price, WP-XL Mariner 7x50 for out at sea, or up into the stars! They have multi-coated lenses, a tough polycarbonate exterior, and a weight that is remarkably low for a 7x50 waterproof and fogproof binocular.



WP-XL
7x50
\$439

MARINE - BIRD WATCHING - LEISURE



GF 32-64MM
F4 R LM WR



GF 30MM
F3.5 R W



GF 50MM
F3.5 R LM WR



GF 110MM
F2 R LM WR

SCAN THE QR CODE FOR LATEST PRICING



CAMERA & VIDEO SPECIALISTS FOR OVER 30 YEARS

STORES AT SIX GREAT LOCATIONS or shop online 24/7 at www.photowarehouse.co.nz/summer/page9



Z 6II

SKU 1016729

NEW

True multimedia powerhouse.

This is what a hybrid still and video mirrorless camera is meant to be. 24.5MP BSI sensor and high-speed shooting with the buffer capacity to match. Outstanding low-light capabilities. Next-generation autofocus. The power of dual processors. Two card slots. Tons of creative features. Flexible power options. Compatibility with a vertical battery grip. Wireless connectivity with smartphones and laptops and so much more.



Dual EXPEED 6



Z 7II

SKU 1016728

Absolute immersive masterpiece.

This is the full frame mirrorless camera for those who sweat every little detail. There's the ultra-high resolution of 45.7 megapixels with no optical low-pass filter. The power of dual processors. 4K Ultra HD video at 60p. The next-generation 493-point autofocus system. High-speed shooting with the buffer capacity to match. Two card slots. Compatibility with a vertical battery grip. Wireless connectivity and so much more.



Purchase a Z 6II or Z 7II before the 24th December and receive a bonus FTZ adaptor (RRP \$598) and a Peak Design Nikon Z cuff (RRP \$59) *Via redemption

CHOOSE THE MOMENT.

Z 14-24mm

f/2.8 S

SKU 1016593

Ultra-wide perspectives that challenge our sense of scale. Clarity that transports you. A level of detail you have to see to believe.



Z 24-70mm

f/2.8 S

SKU 1015179

Uncompromising optical performance. A powerful mid-range zoom that's indispensable for a wide range of photo and video applications.



Z 70-200mm

f/2.8 S

SKU 1015853

Sports, concerts, weddings, wildlife, portraiture and so much more - all with the incredible low-light performance of an f/2.8.



Z 50mm

f/1.8 S

SKU 1014688

50mm prime. An icon. Visionary perspective. Versatile focus depth. Capable of delivering striking, decisive images in nearly any light.



Z 24-200mm

f/4-6.3

SKU 1015911

An immensely versatile all-in-one zoom that's ready to capture all the beauty you encounter on your next shoot.



Nikon FTZ Mount Adapter

SKU 1014689

The legacy of compatibility continues. Use over 360 NIKKOR F-mount lenses on your new Nikon Z Series mirrorless body.



CHOOSE ANOTHER TAKE A PHOTO. DON'T STOP.



SCAN THE QR CODE FOR LATEST PRICING

CAMERA & VIDEO SPECIALISTS FOR OVER 30 YEARS

STORES AT SIX GREAT LOCATIONS or shop online 24/7 at www.photowarehouse.co.nz/summer/page10



D5600
SKU 1012904

Step up to the next level.

Stand out from the crowd with photos and videos so impressive, they'll inspire you to keep shooting and learning. Out of the box, you can leave things up to the camera and immediately start taking great photos and videos without the learning curve.

D780
SKU 1015856

Versatility meets agility.

Versatility through the splendor of full frame photography and 4K video, slow motion, time-lapse, remoteless long exposures and a host of impactful creative shooting tools to keep inspiration flowing. The D780 is a creator's dream come true.

D850
SKU 1013757

Extreme resolution meets speed.

With remarkable advancements in sensor design, autofocus, dynamic range, sensitivity, Speedlight control, battery life, shutter and mirror drive mechanisms, Silent Photography in Live-View mode, focus shift capability and more - this is possibly the most well-rounded DSLR yet.



Scan the **QR CODES** at the bottom of these pages to see our **Hot Prices** on these **Nikon** products!

CHOOSE THE MOMENT.
ZERO IN.
CHOOSE ANOTHER.
GET IT SHARP.
CHOOSE ANOTHER.
TAKE THE SHOT.
DON'T STOP.

AF-S 14-24mm
f/2.8G ED

SKU 1002483

With a fast fixed maximum aperture of f/2.8, the award-winning AF-S NIKKOR 14-24mm f/2.8G ED delivers superb performance in any situation.



AF-S 24-70mm
f/2.8E ED VR

SKU 1011309

With a fast fixed aperture of f/2.8 across a 24-70mm zoom range, this lens provides both fine resolution and natural representation.



AF-S 70-200mm
f/2.8E FL ED VR

SKU 1012843

The benchmark for fast telephoto zoom lenses, unrivaled for low-light, sports, wildlife, concerts, weddings, portraits and everyday shooting.



ProStaff 5
10x42 Binoculars

SKU 1011150

Combining a weather-sealed housing and fully multicoated optics to create a general purpose set of binoculars for mid-range viewing tasks.



Sportstar EX
10x25 DCF Binoculars

SKU 1003613

Lightweight binoculars with a slim, stylish body, 10x magnification, 25mm objective lens and wide field-of-view.



MONARCH 5
8x42 Binoculars

SKU 1009907

Capture stunning views of birds, wildlife, motorsports, athletes, performers, landmarks and other faraway subjects.



SCAN THE QR CODE FOR LATEST PRICING



CAMERA & VIDEO SPECIALISTS FOR OVER 30 YEARS

STORES AT SIX GREAT LOCATIONS or shop online 24/7 at www.photowarehouse.co.nz/summer/page11



TAMRON

E-mount LENS LINEUP



New

**Truly a dream come true
for Sony full-frame mirrorless camera users**

Tamron's E-mount lens series is designed to maximize the potential of full-frame mirrorless cameras and provides magnificent image quality whilst being very fast and extremely compact. Who says great things can't come in small packages?

Scan the **QR CODES** at the bottom of these pages to see our **Hot Prices!**

- Nikon F-mount
- Canon EF-mount



17-35mm
F/2.8-4 Di OSD
Model A037

● SKU 1014756 ● SKU 1014755

An ultra-wide angle lens that combines superb image quality with outstanding portability as the lightest and smallest size in its class.



35-150mm
F/2.8-4 Di VC OSD
Model A043

● SKU 1015269 ● SKU 1015270

Quality, flexibility, and broad creative expression. A dedicated portrait lens that allows you to zoom through composition options as the creative ideas zoom through your head.



150-600mm
F/5-6.3 Di VC USD G2
Model A022

● SKU 1012578 ● SKU 1012579

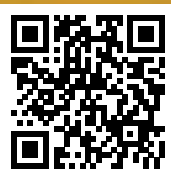
Discover the next-generation ultra-telephoto zoom lenses, with upgraded optical performance enables handheld shooting with remarkable definition.



100-400mm
F/4.5-6.3 Di VC USD
Model A035

● SKU 1014057 ● SKU 1014058

Heavyweight performance in a lightweight lens. A highly portable, ultra-telephoto zoom lens with AF precision for shooting action clearly and easily.



SCAN THE QR CODE FOR LATEST PRICING

CAMERA & VIDEO SPECIALISTS FOR OVER 30 YEARS



STORES AT SIX GREAT LOCATIONS or shop online 24/7 at www.photowarehouse.co.nz/summer/page12



See the Bigger Picture with **dji**

DJI RS 2

MASTERFULLY CRAFTED

NEW
RELEASE



\$1,399

DJI RS 2 is an unparalleled solution for dynamic cinematography. Every design element and feature is designed to deliver industry-leading camera stabilisation. Simply put, DJI RS 2 is crafted for you to master filmmaking.

DJI RSC 2

FILMMAKING UNFOLDS

NEW
RELEASE



\$799

Professional-level results are effortless with DJI RSC 2. This compact stabiliser for mirrorless and DSLR cameras features a foldable design and intuitive features, empowering film makers, one-man crews, and content creators everywhere.

POCKET 2

MAGIC AT HAND

NEW
RELEASE



\$669

The latest release from DJI the Osmo Pocket 2. Featuring a 3-axis mechanical gimbal with 8 x Zoom, 64MP photos and 4K video which precisely adjusts for your movements, turning your handheld video of a golden sunset or your child's first steps into a movie-like scene.

MAVIC AIR 2

UP YOUR GAME



\$1,698

Mavic Air 2 takes power and portability to the next level, offering advanced features in a compact form factor. Intelligent shooting functions and excellent image quality put aerial masterpieces within reach. Safer, smarter flight enables you to up your game while fully enjoying the creative process.

MAVIC MINI

THE EVERYDAY FLYCAM



The compact yet powerful Mavic Mini is the perfect creative companion, capturing your moments in a way that effortlessly elevates the ordinary.

Together with the easy-to-use DJI Fly app, you'll enjoy a simplified flying experience and a perspective unlike any other.



\$699

SONY VIDEO

CAPTURE IT THE WAY YOU SEE IT. RELIVE GREAT MOMENTS

FDR-AX700

Designed for professional performance and ease of use, the FDR-AX700 captures every subject with the realism of 4K HDR (HLG) video, thanks to Fast Hybrid AF and other pro-class capabilities. Capture life just as you see it in true-to-life 4K HDR (HLG) images with 1.0 - type stacked Exmor RS™ CMOS image sensor. There are no limits to how far this Handycam® can take your shooting ambitions.



CX405

Keep valuable memories fresh for everyone to enjoy with the solid integrity and all-around ease of the CX405 Handycam®. Optical SteadyShot™ with Intelligent Active Mode prevents camera shake and blur from ruining pictures. AVCHD and XAVC S formats ensure faithful and vibrant recordings. It's all so compact and always ready to go.



FDR-AX53

The performance packed into the top-class 4K Handycam® is peerless. Balanced Optical SteadyShot™ and Fast Intelligent AF achieve exactly the images you aim for. A new microphone structure captures ambience that's all-surrounding. You can even play with time in motion or gain control of pro-style/manual functions. The possibilities and pleasures are endless.



ZV-1

DESIGNED FOR CASUAL VIDEOGRAPHY

No experience is necessary to capture great looking videos! The ZV-1 design makes creating outstanding selfie and vlog content easy. Right down to the last detail, the ZV-1 is all about empowering you to make inspirational content.



SCAN THE QR CODE FOR LATEST PRICING



CAMERA & VIDEO SPECIALISTS FOR OVER 30 YEARS



STORES AT SIX GREAT LOCATIONS or shop online 24/7 at www.photowarehouse.co.nz/summer/page13

OLYMPUS

BREAK FREE FROM HEAVY GEAR



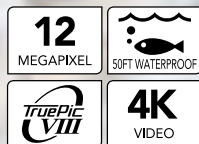
Scan the **QR CODE** at the bottom of the page to check out the '**FREE GIFT**' when you purchase an **Olympus Camera**

Tough TG-6 BUILT FOR ADVENTURE

Waterproof, shockproof, dustproof, crushproof and freezeproof. Its built-in toughness that ensures you'll never worry about your camera.



Awsome deal at only
\$648



Available in
Black and Red

OM-D E-M1x

It's not often we see a camera designed so perfectly for a specific use. Rocket fast, durable, capable and with auto focus tracking that is hard to believe. Recent price reductions move the E-M1x firmly into the frame for sports and wildlife shooters.



OM-D E-M1 Mark III

Olympus's new enthusiast/pro option features the Dual AF and a the 5 Axis image stabiliser without some of the bulk of the E-M1x. Super versatile and a joy to use, if you are into anything from Astro to portraits put the E-M1 Mark III in your shopping basket.



OM-D E-M1 Mark II

Yesterday's hero admittedly, but that comes with advantages! With a new price point on the body this is the perfect time to get the crew in store to make you up the kit of your choice. 12-100 zoom? 12-45? Maybe a 25mm f1.2, now that would be cool. Get in touch now before the last of the E-M1 II bodies leaves the building.



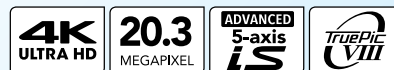
OM-D E-M5 Mark III

If getting out and about is your idea of fun the E-M5 Mark III is for you. Tramping, climbing or just chasing your family about this weatherproof, compact mirrorless camera is packed full of features.



OM-D E-M10 Mark IV

The latest member of the E-M10 family boasts the latest 20mp sensor, live screen, 4K video and wifi. If you are looking to upgrade your image taking but still have instant sharing abilities the new Mark IV is the go.



OM-D E-M10 Mark III

Here we go again, yesterday's hero at an outstanding price! Down a little in resolution at 16mp, the E-M10 Mark III still has the 5-Axis image stabiliser, huge 3 inch tilting touch screen and super fast auto focus. Start your Olympus journey with an E-M10 Mark III.



PROFESSIONAL BINOCULARS

Discover the fascinating world of distant details with Olympus high-quality binoculars that deliver bright and sharp images.

PRO SERIES for water and extreme enthusiasts

- Clear, bright, natural view
- Sharp, high resolution images
- Excellent close-up capability
- Waterproof/Fogproof/Dirtproof

Waterproof binoculars can be submerged to a depth of 1 metre for up to 5 minutes



EXPS I SERIES for ambitious nature enthusiasts and globetrotters

- Perfect view in low light conditions
- Fully multi-coated lenses for maximum image brightness and contrast
- High index BaK-4 prism for bright, crisp, edge-to-edge images



M. ZUIKO

9-18mm
f4.0-5.6

Best value wide angle, get more in the frame!



M. ZUIKO

100-400mm
f5-6.3 IS ED

Much awaited wildlife/sport lens, limited numbers.



M. ZUIKO

EZ-M Pro 40-150mm
f2.8

A sports shooters dream, the amazing f2.8 aperture turns night into day!



M. ZUIKO

75-300mm
f4.8-6.7 II ED

Family playing sport? Fill the frame, zoom in with this!



M. ZUIKO

60mm
f2.8 Macro

Flowers? Bugs? Jewellery? Three questions, one answer.



SCAN THE QR CODE FOR LATEST PRICING

CAMERA & VIDEO SPECIALISTS FOR OVER 30 YEARS



STORES AT SIX GREAT LOCATIONS or shop online 24/7 at www.photowarehouse.co.nz/summer/page14

SIGMA SHOOT TRAVEL, SPORTS, NATURE & WILDLIFE

C Contemporary

Someone at Sigma was a genius. The team that decided to make a range that was better than the genuine brand lenses, rather than cheaper, deserves a medal.

The Sigma lenses here are just a portion of a huge range, check out at www.photowarehouse.co.nz

16mm F1.4 DC DN | C

Available in Sony E, Canon EF-M and M43 mounts, this super fast wide is great for street or Astro.

\$699



30mm F1.4 DC HSM | A

Another really sharp compact prime lens for crop sensor, if you are after just one lens, this could be it.

\$575



100-400mm F5-6.3 DG/DG DN HSM | C

Sony E and Leica L owners have been screaming for a high quality long zoom, so Sigma made one! In store now.

DG lens **\$1398** DG DN lens **\$1599**



150-600mm F5-6.3 DG OS HSM | C

The lens that has brought world class sports and wildlife shooting to the masses. It seems big, but for what it does, it's tiny!

\$2890



A Art

Be aware, Sigmas Art series prime lenses are addictive. Buy one, and it may be the end of your love affair with zooms.

24-70mm F2.8 DG OS | A

If that full frame kit is just a tiny bit out of reach, price up your desired Canon/ Nikon kit with this 24-70 and see if it's attainable

\$2099



85mm F1.4 DG DN | A

The new slimmed down 85mm is perfect for Sony E and Leica L mount owners, easier on the wrists, beautiful images.

\$1799



35mm F1.4 DG HSM | A

The Art series lens that started it all, street photography, weddings, this super fast prime is a joy to use.

\$1147

50mm F1.4 DG HSM | A

Or, you love your 35mm but want just a touch longer? This classic 'standard' lens is here waiting for you.

\$1349



105mm f1.4 DG HSM

We admit it, this is huge, but it didn't get the nickname 'bokeh master' for nothing. If you can carry it, it's epic.

\$2798

SIGMA MOUNT CONVERTER MC-11 / MC-21

Canon EF lenses to Sony E, or EF to Leica L, these converters open a world of possibilities.

\$399



HARMAN CAMERA

Reusable 35mm Camera with Flash including 2x Kentmere Pan 400 Film

A basic and accessible film camera for general use. Resembling a disposable camera, this plastic camera has the added benefits of a reusable design.

The first two rolls are real B&W - radical, but you are free to reload colour or B&W next time around.



\$77.95

The perfect gift for anyone looking to try shooting film

SUPPLIED WITH BLACK & WHITE FILM

ILFORD PHOTO THE HOME OF B&W FILM PHOTOGRAPHY STEP UP FROM THE ORDINARY.

Why choose ILFORD? Their black and white products enable the highest photographic quality, having been honed by 137 years of experience. ILFORD are passionate about what they do with a long tradition of commitment to black and white film photography.

HP5 PLUS 35mm 24 Exposure

HP5 Plus is a fast black and white film. It is ideal for action, available light and general purpose photography.

\$13.95



XP2 SUPER 35mm 36 Exposure

If you wish to shoot B&W but want the ease and economy of colour processing at your local store? XP2 is for you.

\$21.95



FP4 Plus 35mm 24 Exposure

FP4 Plus is an exceptionally fine grain, medium speed black and white film.

\$14.95



HP5 PLUS 120

ISO 400, medium contrast, all-purpose black and white film. Ideal for action, documentary and available light photography.

\$17.95



GALERIE
PROFESSIONAL INKJET PHOTO RANGE
SMOOTH PEARL INKJET PAPER
Professional pearl finish with superb photographic image quality and consistency.



GALERIE
PROFESSIONAL INKJET PHOTO RANGE
DISCOVERY PACK INKJET PAPER
This pack contains five different A4 fineart papers from the Galerie Professional Inkjet Photo.

SCAN THE QR CODE FOR LATEST PRICING



CAMERA & VIDEO SPECIALISTS FOR OVER 30 YEARS

STORES AT SIX GREAT LOCATIONS or shop online 24/7 at www.photowarehouse.co.nz/summer/page15



HAWKE[®] VISION ACCOMPLISHED

Hawke is at the forefront of optical performance with class-leading innovation and design. Accuracy, strength and precision: our optics blend iconic design, exceptional engineering and unrivalled craftsmanship to create an unforgettable viewing experience.



NATURE-TREK BINOCULARS & SPOTTING SCOPES

GETTING YOU CLOSER TO THE ACTION.

The Nature-Trek family has been sculpted to allow you to get closer to the environment wherever and however you travel. The Nature-Trek family utilises our SystemH2 optics produced in a shock resistant polycarbonate body, providing a robust yet lightweight package.

NATURE-TREK 10x50

Nitrogen purged / Waterproof / Fog proof



\$454

NATURE-TREK 16-48x65 SPOTTING SCOPE

Nitrogen purged / Fully Multi-Coated
Waterproof / Fog proof

A Fully Multi-Coated optical system combined with BAK-4 Porro prisms produce extremely clear and sharp images.



\$630

VANTAGE BINOCULARS & SPOTTING SCOPES

MAXIMISE YOUR VIEW

Designed to maximise value and performance, without breaking the bank. Using a waterproof chassis and Fully Coated optical system, Vantage binoculars are the perfect choice for casual nature observers. A stylish package at an affordable price, the Vantage range comes complete with everything required for an incredible viewing experience.

VANTAGE 8x25

Nitrogen purged / Waterproof / Fog proof
Fully Coated optics produce clear images
High resolution BAK-4 roof prisms
Lightweight, durable rubber coated chassis.



\$228

VANTAGE 20-60x60 SPOTTING SCOPE

Nitrogen purged / Fully Multi-Coated
Waterproof / Fog proof

Supplied with a hard storage case, soft scope cover and an adjustable mini tripod with integrated window mount.



\$398

FRONTIER

IMMERSE YOURSELF IN SUPERIOR VISION

All Frontier models feature Hawke's new H7 optics, offering stunning high definition viewing with incredible colour control and phase correction. High performance lens coatings and Dielectric Coated prisms ensure the highest level of light transmission.

FRONTIER HD X 10x32

Nitrogen purged / Waterproof / Fog proof



\$869



\$548

AIRPORT ADVANTAGE™ XT

The graphite-colored Airport Advantage XT from Think Tank is an extra-high-capacity rolling camera case that is designed to meet the carry-on requirements for most international and US airlines while minimising weight.



\$298

AIRPORT ESSENTIALS

Big things come in small packages. The Airport Essentials accommodates a standard DSLR, 4-6 standard zooms, iPad and up to 13" laptop. Fits up to a 300 f/2.8 lens attached a standard sized camera body.



\$318

BACKSTORY 13 BACKPACK

Big things come in small packages. The Airport Essentials accommodates a standard DSLR, 4-6 standard zooms, iPad and up to 13" laptop. Fits up to a 300 f/2.8 lens attached a standard sized camera body.



\$185

CITYWALKER 10 BLUE SLATE

These lightweight, soft and refined messenger bags have a hip hugging form and room for a tablet. The fully removable insert allows you to convert from a camera to messenger bag.

A fully removable padded insert and dedicated tablet or laptop pocket makes the CityWalker a true multiple purpose bag.



\$58

DIGITAL HOLSTER 10 V2.0

The Digital Holster 10 V2.0 is designed for smaller DSLRs, such as the Canon Rebel XTi and XSi, and the Nikon D3100, D3000 and D5000. The form-fitting design minimises the camera case's bulk, making it easier and more convenient to travel with.



\$69-\$128

EMERGENCY RAIN COVER

The Emergency Rain Covers are a simple, compact solution to protect your gear from a downpour or dusty conditions. Never let bad weather catch you off guard! Seam-sealed for extreme protection in downpour or dusty conditions.



\$56

LENS CASE DUO 30 - BLACK

Keep your lens protected while maintaining access with the black Lens Case Duo 30 from Think Tank. With multiple carrying options like a shoulder strap and belt loop, this case adapts to your carrying equipment. Its water-resistant nylon exterior keeps moisture away from your sensitive lens.



\$98

MIRRORLESS MOVER 20 - DEEP RED

The deep red Think Tank Mirrorless Mover 20 is a shoulder bag that can hold a mirrorless camera with two to three lenses, plus accessories. The main compartment has a zippered closure and two removable padded dividers for customising the interior.



\$298

VISION 15 - DARK OLIVE

This dark olive Vision 15 shoulder bag from Think Tank is a versatile, messenger-style camera bag that can accommodate a medium-sized DSLR with up to three to five lenses, including an attached 24-70mm f/2.8 lens, as well as a detached 70-200mm f/2.8 lens, plus an on-camera flash.



SCAN THE QR CODE FOR LATEST PRICING

CAMERA & VIDEO SPECIALISTS FOR OVER 30 YEARS

STORES AT SIX GREAT LOCATIONS or shop online 24/7 at www.photowarehouse.co.nz/summer/page16



Let's go make pictures, make art, make magic.

TORTOISE 35C + GX35 KIT

The small yet mighty Tortoise Columnless Carbon Fiber Three Series Tripod with GX35 Ball Head from Benro is a compact, lightweight travel tripod with a high load capacity and remarkable stability. The center column-free design makes it nimble and lightweight for travel and reduces the potential for shake common to high center column positioning.



\$578.00

BAT ZERO SERIES ALUMINUM TRAVEL TRIPOD WITH VX20 BALL HEAD (55.6")

The Bat Zero Series Aluminum Travel Tripod with VX20 Ball Head from Benro is a compact, lightweight tripod with a high load capacity and remarkable stability.



\$328.00

S6PRO VIDEO HEAD MAX LOAD 6KG

Featuring a 65mm flat base with a 3/8" - 16 threaded hole, the Benro S6Pro Fluid Video Head can efficiently be moved between compatible tripods and sliders, jibs, monopods, and other support gear. It supports up to 13.2 lb loads and offers 5+0 steps of counterbalance and continuous pan and tilt drag.



\$358.00

BLB1 UNIVERSAL CAMERA L-BRACKET

The Benro Universal L Bracket is designed to help improve the stability of your camera when shooting in Portrait mode. When using the L Bracket, whether shooting in landscape or portrait, the camera always stays supported on top of the tripod head, improving stability and providing sharper images.



\$87.00

BK15 MINI TRIPOD AND SELFIE STICK

A multi-purpose mini tripod and extendable self stick, featuring a multi-angle ball head that allows movement in horizontal, vertical and diagonal directions. The BK15 mini tripod & selfie stick with remote control can be used as a miniature table top tripod or as a wireless selfie stick.



\$44.90

DUAL-TUBE ALUMINUM VIDEO TRIPOD WITH S7 HEAD

Benro's S7 Dual Stage Video Tripod Kit is a complete tripod system ideal for studio applications and handling camera rigs weighing up to 15.4 pounds. The kit pairs the S7 video head with a twin-leg aluminum tripod.



\$917.70

ADVENTURE ALUMINUM TRIPOD WITH HD1A PAN AND TILT HEAD

The 4.3 lb Adventure Aluminum Tripod with HD1A Pan and Tilt Head from Benro is an all-purpose four-section support with flip leg locks that open, so you can extend the legs along with the rapid center column to a maximum height of 60.4".



\$319.70

T800EX DIGITAL ALUMINUM TRIPOD WITH 3-WAY PAN/TILT HEAD

The T800EX Digital Aluminum Tripod with 3-Way Pan/Tilt Head from Benro is an entry-level camera support that can hold up to 4.4 lb. It has 3 leg sections that are extended and held in place using flip locks, and a mid-level spreader adds overall stability.



\$115.00

FH100M2 MASTER 100MM FILTER HOLDER KIT

This Benro FH100M2 Master 100mm Filter Holder Kit allows for the convenient use of up to three separately available 100mm wide, 2mm thick filters and a separately available Benro MACPL82 82mm Circular Polarizer Filter.



\$148.00

FH100M2K2 FILTER HOLDER KIT

The revolution of FH100M2 filter holder has been improved according to photographers' actual use. The compact structure helps the photographers get rid of light leakage. Quick mount and dismount helps photographers be in shooting status quickly. The precise gear adjustment shows the improvements from the industry to photograph.



\$598.00

Scan the QR CODES at the bottom of these pages to see our Hot Prices!

BENRO® Optical Filters

Benro's filter systems set a new benchmark for quality, design and functionality for photographers the world over. With glass and resin filter options, Benro Filters can help take your photography to the next level.

CIRCULAR FILTERS

Circular filters from Benro come in three sizes: 82mm, 95mm and 150mm. Each size of circular filter is designed to work with filter holders from either the 100mm or 150mm ranges, and come in two designations, SHDCPL (super high definition circular polariser) or MACPL (master series circular polariser).

SQUARE FILTERS

A mounted filter system available in three size options (100mm, 150mm, 170mm). Filters are available in either glass or resin material (170mm glass only).

SCAN THE QR CODE FOR LATEST PRICING



SL60w >> LED Video Light

Godox SL-60 Video Light offers high light brightness and color rendering index with high-quality LED beads, presenting the objects authentically. The video light is equipped with a remote control to adjust brightness and grouping dimming wirelessly, and a large LCD panel to display the brightness and temperature precisely.



\$248

SL150II >> LED Video Light

A versatile constant light source well-suited for video work, this SL-150 LED Light from Godox is a daylight-balanced, 5600K light featuring a COB (chip on board) LED for high brightness and color accuracy.



\$798

AD400Pro >> All-in-One Outdoor Flash

AD400Pro All-in-One Outdoor Flash has 400Ws strong power, 0.01~1s recycle time, 12 continuous flashes in 1/16 power output, 30W LED modeling lamp, 380 full power pops, stable color temperature (changes within $\pm 75K$ over the entire power range in color temperature mode). It is compatible with TTL auto flash systems of multi-brand cameras.



\$998

V1 >> TTL Li-ion Round Head Flash

CN5F0P

TTL Li-ion Round Head Camera Flash V1 adopts round flash head to offer studio-level soft and even light effects. With powerful functions and plentiful accessories, it is suitable for portrait photography, wedding photography, event photography, travel photography, still life photography, etc.



\$398

V860 II >> Flash

CN5F0P

VING TTL Li-ion camera flash V860II guarantees better light shooting experience with built-in Godox 2.4G wireless X system, GN60 high guide number, and 20 to 200 zoom flash coverage. Optical transmission with even illumination and stable output. Built-in Godox 2.4G wireless X system offers all-in-one functions and 100 meters further transmission distance.



\$348

AD200Pro >> Pocket Flash

An enhanced version of its predecessor, the AD200ProTTL Pocket Flash Kit from Godox is built around a unique flash source with a standard speedlight head and a bare bulb head that give you the option of two distinctly different qualities of light.



\$698

Kit includes:

2x head attachments, 1x lithium battery, 1x charger, 1x carry case.

>> LED 308C Video Light

The Godox LED 308C Video Light is a medium sized constant LED video light for DSLR's and video cameras. The Godox video light features 308 LED's in a wide panel, wireless remote operation, and can be mounted on a camera hotshoe, light stand, or stand separately on the included mini stand.



\$178

>> LC500 LED Light Stick

The LED Light Stick LC500 from Godox looks like a light saber or wand and its "magic" is its versatility and sheer pleasure of use. The Light Stick is 22" long with a diameter of 2" and its 516 LEDs have a color temperature of 5600K or 3300K to meet ambient conditions, match other fixtures, or just for creative effects. Light intensity is variable too, from 10 to 100% to meet your subject's illumination requirements. While its output is omni-directional, it can be shaped and directed by the included barndoors.



\$388

>> Mini Flash for Mirrorless Digital Canon TT350C

For use with Canon cameras and is compatible with TTL autoflash. With this flash, your shooting will become simpler. Compact body, 2.4G wireless transmission and 30 meters further transmission.

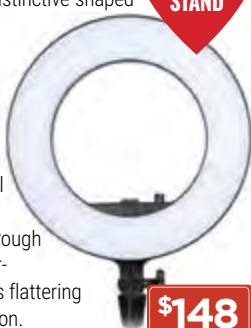


\$189

Scan the QR CODES at the bottom of these pages to see our Hot Prices!

>> LED ring light

The Black LR180 Daylight Ringlight from Godox features a distinctive-shaped light fixture with a color temperature of 5600K that's ideal for shooting outdoors or in situations with large windows. The light is mountable to an optional grip head or stand, allowing you to shoot through it for a silky smooth near-shadowless effect that is flattering to your talent's complexion.



BONUS LIGHT STAND

\$148

>> LED500w video light

This LED500 video light provides a wide spectrum, beautifully soft and even illumination for video and still photography. The four reflective barndoors can maximise the light efficiency.



BONUS LIGHT STAND WORTH \$89

\$388

>> LED1000c video light

This LED video light provides a wide spectrum, beautifully soft and even illumination for video and still photography. It is ideal for small and medium-sized studio and indoor photography.



BONUS LIGHT STAND WORTH \$89

\$589



WAS \$188 NOW \$95

Five surfaces: gold, silver, black, white, translucent.



SCAN THE QR CODE FOR LATEST PRICING

CAMERA & VIDEO SPECIALISTS FOR OVER 30 YEARS

STORES AT SIX GREAT LOCATIONS or shop online 24/7 at www.photowarehouse.co.nz/summer/page18



S30 >> LED Focusing LED Light

The S30 LED Focusing LED Light from Godox is a lightweight, versatile source with light intensity, beam spread, and power options. The S30 has an adjustable beam angle of 6 to 55 degrees for long throw work or to flood out a silk. The output can be further controlled by swinging one or more leaves of the 8-way barndoors into the beam path to facilitate selective lighting.

Can also be powered by Sony NP-F series battery.



\$398

X Pro >> TTL Wireless Flash Trigger

Xpro Series TTL Wireless Flash Trigger can not only control the flashes with built-in Godox wireless X system e.g. camera flashes, outdoor flashes and studio flashes, but also can control the flashes without Godox X system by 2.5mm sync cord jack.

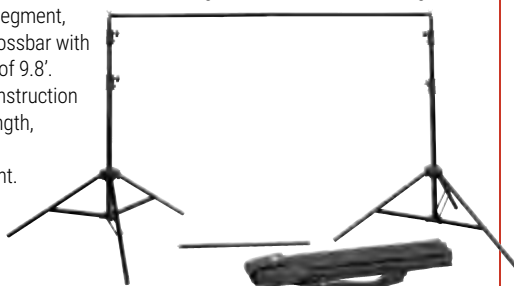
Available for Canon, Nikon, Sony, FujiFilm, Olympus and Panasonic cameras.



\$148

>> Background support kit

Set-up a background in your studio or on location with the black BS-04 Retractable Background Stand with Carrying Bag from Godox. Included are two stands with a max height of 8.5' and a folded height of 3.2', and a 3-segment, retractable crossbar with a max length of 9.8'. Aluminum construction provides strength, durability, and reduced weight.



\$248

>> MS300-D 3-Monolight Kit

Godox has put together this MS300-D 3-Monolight Kit for photo enthusiasts requiring a complete system for the studio or for shooting on location.

Kit includes:

- 3x Flash Head
- 3x light stand
- 2x 60x60cm softbox
- 1x reflector
- 1x silver Umbrella
- 1x XT16 wireless transmitter

\$998



>> 80x80 Speedlight softbox

Designed for photographers who like to travel light, the S-Type Bowens Mount Flash Bracket with Softbox Kit from Godox includes a compact tool for adapting the output of your speedlight. You can attach most brands of flashes onto the back of the bracket either horizontally or vertically, using a knob at the top to adjust the fit.



\$89

gift packs
now available

give instax this Christmas

instax

FUJIFILM

don't just take, give.

EPSON
EXCEED YOUR VISION

Printers and
Scanners

Remarkable Form,
Exceptional Function

Perfection® v600 Photo Scanner

Delivers outstanding performance with 6400dpi resolution, 3.4Dmax and exceptionally high quality document and film scanning capabilities, with the ability to scan film as large as 6 x 22cms.



\$598

STOCK
ARRIVING LATE
NOVEMBER
ORDER NOW
TO AVOID
MISSING OUT

Perfection® V850 Pro Scanner

Convert film, slides, prints, and other documents into high resolution digital images with the Perfection V850 Pro Scanner from Epson. Get extraordinary scans with state-of-the-art 6400 dpi optical resolution.



\$1290

STOCK
ARRIVING LATE
NOVEMBER
ORDER NOW
TO AVOID
MISSING OUT

Surecolor SC-P906

A2+ Fine Art Printer

Delivers professional features including high-capacity cartridges with an expanded colour range, new printing modes, networking and wireless connectivity, large touchscreen display, plus advanced media handling.



\$1995

Surecolor SC-P706

A3+ fine art printer

Epson raises the bar again with its cutting-edge design of the new high quality A3+ photo printer, which delivers professional features.



\$1248

SCAN THE QR CODE FOR LATEST PRICING



CAMERA & VIDEO SPECIALISTS FOR OVER 30 YEARS

STORES AT SIX GREAT LOCATIONS or shop online 24/7 at www.photowarehouse.co.nz/summer/page19

VIDEOGRAPHY EQUIPMENT

All the Equipment You Need to Make Awesome Videos ...

ATOMOS NINJA V

1920 X 1080 TOUCHSCREEN DISPLAY
10-BIT EXTERIOR VIEWABLE MONITOR

The Atomos Ninja V 5" 4K HDMI Recording Monitor is a 5" on-camera monitor/recorder that records and plays back DCI 4K, UHD 4K, and HD video from purpose-built mini-SSD.

It features a 10-bit FRC IPS screen with a brightness of 1000 cd/m², which makes it suitable for use in both exterior and interior conditions.



\$1,120

FEELWORLD F6PLUS

5.5" TOUCHSCREEN MONITOR
WITH 4K HDMI&3D LUT

Monitoring Tools with Quick Accessibility The F6 PLUS keeps the original great: it's small, lightweight and has great image quality. In addition, it now features the touch screen and has the ability to import 3D LUTs via the SD card. The F6 PLUS is the perfect monitor for those who need an easy-to-use lightweight on-camera monitor such as gimbal operators, or shooters that are always on the go.



\$319

FEELWORLD LIVEPRO L1

LIVE HDMI SWITCHER

The F6 PLUS is 5.5 inch and only 235g, and makes it the ideal size and weight for field production. The entire monitor's build is sturdy and compact, allowing you to easily mount it to your DSLR camera or even a gimbal stabiliser. It gives you the freedom to shoot well anywhere.



\$598

APUTURE LIGHT STORM 300D

Built on the foundation of the popular LS C300d, Aputure's Light Storm LS C300d Mark II LED Light Kit with V-Mount Battery Plate is an enhanced version with 20% more power, refined features, and advanced connectivity. Aputure uses Chip on Board (COB) technology to produce a 5500K color temperature, with power consumption of just 350W, while outputting 3500 lux of light with an efficient reflector at a distance of 9.8'. In addition to power efficiency, this fixture also has a CRI/TLCI rating of 96, indicating accuracy in color rendering.



\$1,995

APUTURE LANTERN SOFTBOX 26"

Ideal for use overhead or to raise the ambient illumination level, the 26" diameter Lantern Softbox from Aputure has the same omnidirectional quality of light as the "China Balls" of yore but is built of durable materials and has accessories such as a skirt set to control the 270-degree beam spread.



\$155

SARAMONIC BLINK 500 B2 KIT

Simplify and expedite your entry into wireless audio with the Saramonic Blink 500 B2, an ultracompact and extraordinarily easy-to-use true wireless microphone system offering a cost-effective, all-inclusive solution for recording two subjects to your camera, camcorder, or mobile device.



\$478

SARAMONIC UWMIC9 KIT

The Saramonic UWMIC9 Digital UHF Wireless Lavalier 1x Transmitter and 1x Receiver Mic System provides vloggers, mobile journalists, and content creators with a quality-sounding, easy-to-use, flexible UHF system that packs a set of sophisticated features into a cost-effective solution.



\$518

BENRO AL DUAL-TUBE 3-SECT TRIPOD W/ K5 VIDEO HEAD

The Benro KH25N video tripod kit is a sturdy, twin-leg video tripod solution designed for compact camcorders and DSLR/mirrorless camera rigs weighing up to 11 lb. The system features dual-stage aluminum legs and a 60mm ball video head for quick leveling.



\$319

SMALLRIG CAGE FOR SONY A7III

ONE-PIECE FULL CAGE FOR SONY A7III AND A7RIII

Form-fitting camera cage with the brand-new dark olive finish. Secures the camera on the bottom and side. Multiple 1/4"-20&3/8"-16 threaded holes. ARRI locating holes and cold shoe. Built-in screwdriver on the bottom.



\$164

SMALLRIG NATO TOP HANDLE FOR SONY

with Record Start/Stop Remote Trigger for Sony Mirrorless Cameras HTN2670 is designed to provide a comfortable grip and features record button on top to control camera start/stop. The handle attaches to the camera cage via standard NATO rail and secures via the thumbscrew.



RODE WIRELESS GO MICROPHONE KIT

Wireless GO is an ultra-compact digital wireless microphone system which is unique in its clip'n'go versatility, incredibly compact form-factor, and unmatched price accessibility.

\$329



SMALLRIG BRACKET FOR Z5/6/7

Modular designed for Nikon Z5/ Z6/ Z7 Camera. Arca-Type compatible dovetail plate with center marks on both axis. Add 16.5mm height based on the original handgrip for pinky support. Extendable side plate allows for tethering or cable release.

\$127



ZOOM H5 AUDIO RECORDER

The H5 Handy from Zoom is a compact, portable handheld digital recorder that is capable of four-track recording and features an interchangeable, modular microphone system. The recorder ships with an XY microphone capsule and is compatible with the existing line of H6 modules including the optional shotgun mic and XLR/TRS input modules.



\$449

Scan the QR CODES at the bottom of these pages to see our Hot Prices!



SCAN THE QR CODE FOR LATEST PRICING

CAMERA & VIDEO SPECIALISTS FOR OVER 30 YEARS

STORES AT SIX GREAT LOCATIONS or shop online 24/7 at www.photowarehouse.co.nz/summer/page20



Comes in black
and white,
plus 5 from
the Polaroid
Spectrum.

Point. Shoot. Keep Forever.

Only
\$265.95
Stock arriving mid
November

PolaroidNow



Partner it with The Polaroid
i-Type Film, available in
Colour and B&W.



Aputure®

NEXT LEVEL LIGHTING

LS-MINI20 DAYLIGHT 3-LIGHT FLIGHT KIT

Mini Lights. Mega Functionality.

A lightweight 3-point lighting setup that's great in the studio but also great on the road. Each light comes with a 4-way barndoors, an AC adapter, a NP-F970 battery with adapter and charger, a USB cable, a crab clamp, a D-Tap cable, and a universal cold shoe mount. It all fits in the padded kit case.

\$1,298

LIGHT STORM LS C300D II V-MOUNT LED

Built on the foundation of the popular LS C300d, Aputure's Light Storm LS C300d Mark II LED Light Kit with V-Mount Battery Plate is an enhanced version with 20% more power, refined features, and advanced connectivity.



\$1,995

RGB PORTABLE LIGHT MC

This lightweight light fixture easily fits in the palm of your hand and can be mounted using the built-in 1/4"-20 threaded mounting hole or attached to metal items via its built-in magnets.



\$179

AMARAN HR672 LED 3 LIGHTS SET

The Aputure Amaran HR672KIT-SSC is a portable LED video light with two daylight balanced spot lights and one bi-colour floodlight. Each of the powerful LED panels has a 95+ colour rendering index rating ensuring that colours are reproduced naturally and accurately.



\$1,378

PENTAX SPORT OPTICS

Open up the new world where you can see from the flowers near your foot, to the starry skies.

U-SERIES

Compact, durable models ideal for use from the field to the theatre.

10x25 UP BINOCULARS

With 10x magnification these compact binoculars are the perfect balance between size and power. Featuring Pentax's famous multi coated lenses, rugged build quality and easy focus control these are perfect for the birders or cricket watchers out there.



\$278

8x25 UP BINOCULARS

Like the 10x25's above, these 8x are still great for birding, but with a tiny bit less power. Very easy to hand hold and if we ever get to travel again they will be perfect. The 8x25 suit people that sometimes struggle to get comfortable with binoculars.



\$228

S-SERIES

Exceptional vision quality meets high-end expectations.

8X40 S-SERIES SP BINOCULARS

Pentax 8x40 wide angle binoculars are a thing of legend. About 15 versions ago my grandad had some. Awesome wide angle view at 8x magnification make these a joy to use. Birders love this model. My grandad used his for horse racing, it didn't help!



\$229



SCAN THE QR CODE FOR LATEST PRICING



CAMERA & VIDEO SPECIALISTS FOR OVER 30 YEARS

STORES AT SIX GREAT LOCATIONS or shop online 24/7 at www.photowarehouse.co.nz/summer/page21

BLACKRAPID® THE WORLD'S MOST TRUSTED CAMERA STRAP



DOUBLE BREATHE

TRUSTED STRAP DESIGN FOR 1 OR 2 SLR, MIRRORLESS CAMERAS.

This double harness keeps your cameras safe and securely by your side during demanding days of shooting.



\$248

SPORT BREATHE

ORIGINAL CAMERA SLING DESIGN, STRAP FOR DSLR, SLR AND MIRRORLESS CAMERAS

The Sport Breathe camera sling is comfortable and fast. Whether hiking the Himalayas or running up and down the sidelines, this strap is built for adventure! Designed for wearing on your left shoulder, your camera is always at-the-ready by your right hip.



\$149

CURVE BREATHE

OVER THE SHOULDER CROSS-BODY MIRRORLESS CAMERA STRAP

The BlackRapid Curve Breathe camera sling incorporates a unique and ergonomically designed pad that hugs your left shoulder to provide the utmost stability and comfort. Chosen by professionals around the world, as well as camera enthusiasts, you cannot go wrong with this sling!



\$125

DOUBLE BREATHE SLIM

TRUSTED DESIGN, HARNESS FOR 1 OR 2 DSLR, SLR AND MIRRORLESS CAMERAS

The Double SLIM is a slightly thinner and lighter version of the Double. This double harness keeps your cameras safe and securely by your side during demanding days of shooting.



\$248

HYBRID BREATHE

OVER THE SHOULDER DOUBLE CAMERA STRAP

This patented double camera strap allows you to carry two cameras, one on each side, with the strap resting on only the left shoulder. Hybrid Breathe can be used as a double or single camera sling. The left side strap is detachable.



\$178



LAOWA The Wildest Lenses for Full Frame Cameras



\$1,239

11MM F/4.5 FF RL
- Super compact and light-weight rectilinear(RL)
- wide-angle lens
- 126° angle of view
- Built-in 62mm filter thread

MOUNT: SONY FE / LEICA M
NIKON Z / L-MOUNT



\$1,669

12MM F/2.8 Zero-D
- World's Widest f/2.8 Lens with close-to-zero distortion
- Ultra-wide 122° angle of view
- Close-to-zero optical distortion

MOUNT: CANON RF / LEICA M
NIKON Z / L-MOUNT / CANON EF
CANON RF / NIKON F



\$899

9MM F/2.8 Zero-D
- Ultra wide-angle coverage up to 113° angle
- Zero-distortion feature
- Tiny size & lightweight design

MOUNT: FUJI X / SONY E
CANON EF-M / DJI DL / MFT

65MM F/2.8 2x Ultra Macro APO



\$719

- First macro lens that Venus Optics designs for APS-C cameras
- 2:1 maximum magnification ratio
- Light and compact

MOUNT: FUJI X / SONY E / CANON EF-M

100MM F/2.8 2x Ultra Macro APO



\$849

- Apochromat (APO) design
- 2:1 maximum magnification ratio
- Canon version is equipped with an aperture control motor and CPU chip
- Its wider magnification range allows macro photographers to capture subjects at any sizes

MOUNT: LEICA M / NIKON Z / NIKON F
L-MOUNT / CANON EF / CANON RF

datacolor

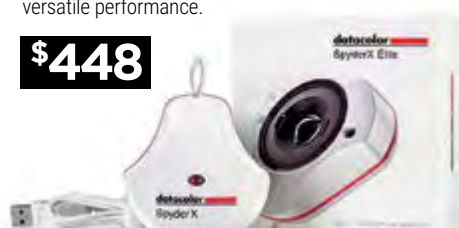
Perfect Color Management

All the Tools for Your Perfected Workflow

SpyderX Elite Colorimeter

Helping to achieve consistently accurate colors from your monitor, the SpyderX Elite from Datacolor is a calibration solution featuring a lens-based color engine for fast, precise, and versatile performance.

\$448



SpyderX Pro Colorimeter

For serious photographers and designers who want a fast, precise and easy-to-use monitor calibrator that helps achieve their creative vision.

\$289



SpyderX Studio

The essential all-in-one photographic workflow solution for precision control from capture, to editing to print.

\$848



SpyderCHECKR® 24

Camera Color Correction for Photo and Video

The Datacolor SpyderCHECKR 24 target offers the accuracy of full size, spectrally designed pigment patches, in a thin, portable, affordable color target designed for both still and motion imaging.

\$79



SCAN THE QR CODE FOR LATEST PRICING

CAMERA & VIDEO SPECIALISTS FOR OVER 30 YEARS

STORES AT SIX GREAT LOCATIONS or shop online 24/7 at www.photowarehouse.co.nz/summer/page22



BUY, TRADE OR SELL

WANT TO BUY A USED ITEM? DO IT LIKE THIS!

Check out the products, images and ratings on our website first. If you are fortunate enough to live in a place with a Photo Warehouse go and see them to chat about it.

If you are unsure about warranties, or supplied accessories just ask, or email trade@photowarehouse.co.nz

Have a think about whether you want to trade a used camera on the used item we have. We do this.

What happens if your purchase is faulty?

Don't stress, if it's faulty when you get it we just refund, it has 14 day right of return. If it develops a fault in use there is a 90 day warranty, we will fix it if possible, find an alternative, or refund.

Order on line, or, get the item you want transferred to your local Photo Warehouse branch.

We would obviously love to see you live in-store and all used goods are currently in our sister store, Photo & Video Merivale. That huge used goods cabinet pictured above is in the Merivale store.



Greg and Matt may look past their best by date, but they have over 50 years of experience between them in used camera trading and would love to help if they can.

WANT TO TRADE OR SELL AN ITEM? DO IT LIKE THIS!

Presuming you are not in Christchurch and can't call in, there are loads of ways to get in touch regarding a trade-in.

Email trade@photowarehouse.co.nz with a few shots of the item, a brief description, and an idea of what you want to trade them for.

We can value your trade, subject to viewing of course, and set you up with a Photo Warehouse team member to check out the trade and organise your new purchase.

If you call into any Photo Warehouse branch and want a value on a trade the team member will contact the two old guys in the photo and try and get you a value on the spot. If it's not instant it won't take long.

We sometimes buy used goods outright, but won't automatically buy everything we are offered. Use that trade@photowarehouse.co.nz address to see if there is interest in buying.

We have been buying, selling and trading for over thirty years and take a lot of pride in our reputation for looking after folk. You can buy and trade with confidence from us.

THERE IS NOTHING LIKE A PRINT

How do you tell a real photo store from an electronics shop?

The answer is simple, real photo stores make photos!

We love prints, we love selling and processing film, and we love printing off your phone.

Those prints can be as simple as a few postcards off your phone, or a canvas 44 inches wide and as long as your lounge.

On top of this, between all of our stores we can copy and restore old prints, scan and archive slides and negatives, convert video tapes to DVD or pen drive, in fact there is not much we don't cover between all of the branches. On top of all of this, we still process film, hundreds of rolls, so if you are part of the current generation of film users make sure you get your films to a store with the best equipment and enough throughput to give you nice clean negs and scans.

The Photo Warehouse currently processes film in store in Auckland, Wellington, Dunedin and Photo & Video in Christchurch.

I know, it seems old fashioned, in this age of pixels, drives, web based galleries, social media and sharing, but a print is special.

Think back to the beautiful black paged albums with super sharp prints in them, there is nothing like a print (have I said that already?)

By the way, the Photo Warehouse still sells the albums and a fine selection of sustainably made Harrison's timber frames, to make the most of your prints.

Not near a Photo Warehouse? Don't panic, we have a very easy to use web based printing service, just got to our website and look for the 'real photos' link on the front page.

PRINTING, IT'S NOT OLD FASHIONED, IT'S FOR KEEPS - GET INTO IT !



SCAN THE QR CODE FOR LATEST PRICING



CAMERA & VIDEO SPECIALISTS FOR OVER 30 YEARS

STORES AT SIX GREAT LOCATIONS or shop online 24/7 at www.photowarehouse.co.nz/summer/page23

WALKABOUT S

Each WalkAbout S has a standard 1/4"-20 camera mount thread, a wrist strap to ensure the monopod stays connected and a comfortable silicone hand grip with an embossed MeFOTO logo.

Available in black, blue, red, and titanium.

\$148

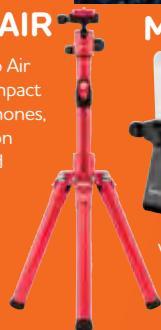


ROADTRIP AIR

The MeFOTO RoadTrip Air is a lightweight and compact tripod ideal for smartphones, compact cameras, action cameras, mirrorless and small DSLR cameras.

Available in black, blue, red and titanium.

\$298



MPH100 SIDEKICK

SMARTPHONE ADAPTER FOR TRIPODS AND TABLETOP

Maximize the photo and video capabilities of your smart phones. The 360° rotating ball joint allows for quick repositioning from vertical for photos to horizontal for video and anywhere in between.

\$49.90

Available in black or titanium

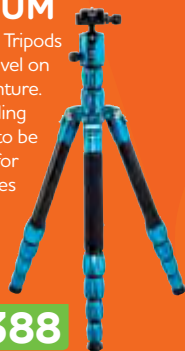


ROADTRIP S ALUMINUM

The MeFOTO S Tripods are ready for travel on any photo adventure. The reverse folding design allows it to be super compact for fitting inside cases or attaching to camera bags.

Available in red, black, blue and titanium.

\$388

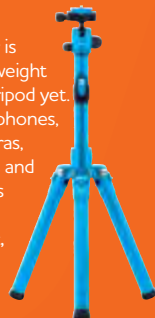


BACKPACKER AIR

The MeFOTO Backpacker Air is our most lightweight and compact tripod yet. Ideal for smartphones, compact cameras, action cameras and small mirrorless cameras.

Available in black, blue and red.

\$198



ROADTRIP S CARBON

The RoadTrip S Travel Tripod from MeFOTO is a five-section support with carbon fiber legs and blue anodised-aluminum twist locks that are knurled for a comfortable grip while opening and closing the locks.

Available in red, black, blue and titanium.

\$488



WE NEVER COMPROMISE.

And neither should you.

Protect your gear through the worst abuses of travel and adventure... Because getting there is the battle.



AXIS 32L BACKPACK

The black, Axis 32L Backpack from Tenba is modeled after tactical, military backpacks and is designed to comfortably and securely carry your mobile photo studio.

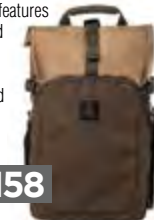
\$485



FULTON 10L BACKPACK

This tan and olive-colored Fulton 10L Backpack from Tenba is a vintage-style canvas bag for photographers or multimedia creators. Its main compartment features adjustable dividers and has enough room for a mirrorless or DSLR camera with a detached 24-70mm f/2.8 lens, two to three additional lenses, plus a folding drone kit.

\$158



SOLSTICE 12L CAMERA BACKPACK

Store, transport, and protect your mirrorless or DSLR camera, 2-4 lenses, 8" tablet, and related accessories with the blue Solstice 12L Camera Backpack from Tenba. The pack has a spacious main compartment with rear access for added security.

\$248



SOLSTICE SLING BAG

With an uncomplicated form factor that offers plenty of room, this 7L blue Solstice Sling Bag from Tenba is a durable equipment case designed for outdoor photographers.

\$158



16" PROTECTIVE WRAP

Photographers searching for a quick and easy way of organising and protecting gear will appreciate the 16", black Tenba Tools Protective Lens Wrap. Lens wraps are available in a variety of sizes and colors. The colors, along with clear windows make it easy to identify contents.

\$32.90



SKYLINE 8 SHOULDER BAG

Protect your gear in this stylish gray Skyline 8 Shoulder Bag from Tenba. Featuring weather-repellent 600D fabric and YKK zippers, this bag can hold one camera body and one to two lenses, allowing for easy transport of your essential gear.

\$59



Online printing

realphotos.co.nz

PRINTS - PHOTOBOOKS - CANVAS - MURAL PRINTS & MORE

FAST, SIMPLE AND FUN!

Only print the photos you want, in the formats and quantities you require with our online photo print application.

No lengthy sign-up forms to fill out before you start and everything is done inside your browser.

ONLINE PRINTS - COLLAGES - PHOTOBOOKS - PHOTO BLOCKS - CALENDARS - CANVAS WRAPS - MURAL PRINTS



PRINT FROM



TAX FREE

CAMERAS FOR OVERSEAS TRAVELERS

ex Auckland Airport now available

afterpay

GET IT NOW, PAY LATER

Don't miss out on the latest cameras and accessories. Load up your cart and pay it off later in 4 easy, interest-free installments, every 2 weeks.

FINANCE MADE EASY

Credit Capable

6 MONTHS INTEREST FREE ON CAMERAS AND EQUIPMENT OVER \$500*

* Normal Credit Capable credit criteria, terms and conditions apply.

CAMERA & VIDEO SPECIALISTS FOR OVER 30 YEARS - 5 SHOWROOMS - OPEN 7 DAYS

PHOTO WAREHOUSE



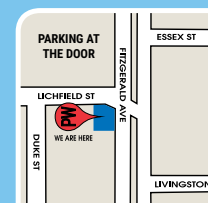
AUCKLAND
175 Great North Rd,
Ponsonby
(09) 303 2148



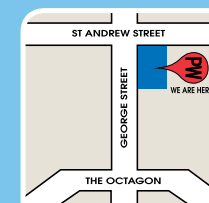
AUCKLAND CBD
182 Queen St
(09) 309 0715



WELLINGTON
140 Victoria St
(04) 385 1542



CHRISTCHURCH
105 Fitzgerald Ave
(03) 366 3151



DUNEDIN
190 George St
(03) 477 7919

PLUS OUR FRIENDS AT

photo & video INTERNATIONAL

Upstairs in Merivale Mall,
195 Papanui Road,
Merivale, Christchurch
OPEN 7 DAYS

Ph (03) 355 7534
www.photo.co.nz

All items in this catalogue are available while stocks last. All offers valid as stated. Disclaimer: All products featured are subject to availability. Prices are subject to change without notice. E & OE. Photo Warehouse aims to offer the very best deals wherever possible, unfortunately due to market volatility and currency fluctuations some prices may have altered as this catalogue went to print. If you see a price that possibly does not reflect the current market please call us to verify. All items in this catalogue have full warranties and Photo Warehouse stands by all products sold. Thanks for shopping at Photo Warehouse.

SCAN THE QR CODE FOR LATEST PRICING

shop online 24/7 at www.photowarehouse.co.nz/summer/page24



CAMERA & VIDEO SPECIALISTS